

Entris® II Advanced Line



Benefits

- Simplifies balance leveling—with built-in real-time level support
- Increases reliability of weighing results—using integrated protection systems
- Controlled access to balance settings—with user management
- Gapless documentation—thanks to CalAuditTrail

Product Information

No matter what you are weighing, the new Entris® II balance is always the right choice. Offering unrivalled value and backed by almost 150 years of German engineering expertise, the Entris® II comes in two product lines, so you can find the balance that meets your specific weighing needs.

Our Entris® II Advanced line gives additional value to the Entris II portfolio, with over 38 models offering benefits such as real-time level support, integrated protection systems, Cal Audit Trail, a graphic touch display and 13 built-in application programs.

Technical Specifications

General Technical Data

Ambient Conditions		Value
Installation site	For indoor use only, max. height above sea level	3000 m
Temperature	Environment (metrological data)* Environment Storage and transport	+10 - +30° C +5 - +40° C -10 - +60° C
Relative humidity**	At temperatures up to 31° C, non-condensing, then linear decrease from max. 80% at 31° C to max. 50% at 40° C	15 - 80%
No heat from heating systems or direct sunlight		
No electromagnetic fields		

Power Supply Device		Value
Input voltage		15 V _{DC} (±10%)
Power consumption, max		4 W
Only by Sartorius power supply unit YEPS01-15V0W with interchangeable country-specific plug-in AC adaptors		

Power Supply Unit		Value
Type: Sartorius power supply unit YEPS01-15V0W		
Primary	Voltage Frequency Current consumption, maximum	100 - 240 V _{AC} (±10%) 50 - 60 Hz 0.2 A
Secondary	Voltage Current, maximum	15 V _{DC} (±5%) 0.53 A
Short-circuit protection		Electronic
Protection class according to IEC 60950-1		II
Pollution level according to IEC 61010-1		2
Overvoltage category according to IEC 60664-1		II
Other data: See label on the power supply unit		

Electromagnetic Compatibility	
Interference resistance: Suitable for use in industrial areas	
Transient emissions	Class B Suitable for use in residential areas and areas that are connected to a low voltage network that also supplies residential buildings

Materials	
Housing	Polybutylene terephthalate (PBT)
Control module	Glass
Draft shield	Glass polybutylene terephthalate (PBT)
Weighing pan	Stainless steel

Warm-up Time		Value
Device, approx		2 h

* For conformity-assessed (verified) balances in accordance with EU requirements, refer to the information on the balance.

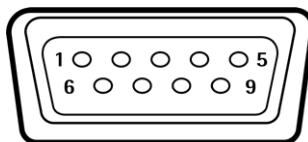
** For conformity-assessed (verified) balances in accordance with EU requirements, the legal regulations apply.

Interfaces

Specifications of the RS232 Interface

Type of interface	Serial interface
Interface operation	Full duplex
Level	RS232
Connection	D-sub connector, 9-pin
Maximum cable length	10 m

Pin assignment



Pin 1: Not assigned
Pin 2: Data output (TxD)
Pin 3: Data input (RxD)
Pin 4: Not assigned
Pin 5: Internal ground
Pin 6: Not assigned
Pin 7: Clear to Send (CTS)
Pin 8: Request to Send (RTS)
Pin 9: Universal key

Specifications for the USB-C Interface

Communication	USB UTL
Connectable devices	Sartorius printers, Sartorius second display, FTDI cable or USB memory stick

Specifications for the PC-USB Interface

Communication	USB Device
Connectable devices	PC

Calibration

Internal calibration isoCAL (models with marking i-1x)

External calibration

Selectable Weight Units*

Gram, kilogram, carat, pound, ounce, troy ounce, Hong Kong tael, Singapore tael, Taiwan tael, grain, pennyweights, milligram, parts per pound, China tael, mommes, Austrian carat, tola, baht, mesghal and Newton

Display

Intuitive graphic touch technology

Built-in Applications

- Weighing | Dosing
 - Counting
 - Percentage weighing
 - Mixing | Net total
 - Components | Totalizing
 - Animal weighing
 - Calculation | Free factor
 - Density determination
 - Underfloor weighing feature for bigger samples
 - Statistics
 - Peakhold
 - Checkweighing
 - Mass unit conversion
 - Pipette smart test
-

Languages

English, German, France, Italian, Spanish, Portuguese, Russian, Polish, Chinese, Japanese, Korean, Turkish, Hungarian

Protection

- Chemical resistant housing parts
 - Glass parts of the draft shield are coated to reduce electrostatic influences
 - Display foil (available as accessory)
 - Dust cover for balances (also available as accessory)
-

Anti-theft Lock

Kensington lock and lockdown capability for cable or chain

* The availability of units depends on national legislation and is therefore country-specific.

Models with Internal Adjustment Feature

Model BCA	Unit	324i-1x ¹	224i-1x ¹	124i-1x ¹	64i-1x ¹	1203i-1x ¹	623i-1x ¹	423i-1x ¹	323i-1x ¹
Readability Scale interval (d)	mg	0.1	0.1	0.1	0.1	1	1	1	1
Maximum capacity (Max)	g	320	220	120	60	1,200	620	420	320
Weighing system		EMC	EMC	EMC	EMC	EMC	EMC	EMC	EMC
Repeatability									
At 5% load, typical value	± mg	0.08	0.08	0.08	0.08	0.5	0.5	0.5	0.5
At approx. maximum load, typical value	± mg	0.1	0.1	0.1	0.1	1	1	1	1
Linearity deviation									
Limits	± mg	0.3	0.2	0.2	0.2	2	2	2	2
Typical value	± mg	0.06	0.06	0.06	0.06	0.6	0.6	0.6	0.6
Sensitivity drift between +10° C and +30° C	± ppm/K	1	1	1	1	1.5	2	2	2
Tare maximum capacity (subtractive)		<100% of maximum capacity							
isoCAL (only for i-1x models):									
Temperature change	K	1.5	1.5	1.5	1.5	1.5	2	2	2
Time interval	h	4	4	4	4	4	6	6	6
For models with approval:									
Accuracy class		I	I	I	I	I	II	II	II
Type		BC-AA	BC-AB	BC-AB	BC-AB	BC-AC	BC-AD	BC-AD	BC-AD
Verification scale interval (e)	mg	1	1	1	1	10	10	10	10
Minimum load (Min)	mg	10	10	10	10	100	20	20	20
Minimum initial weighing according to USP (United States Pharmacopeia), Chap. 41									
Optimum minimum initial weighing	g	0.082	0.082	0.082	0.082	0.82	0.82	0.82	0.82
Typical minimum initial weighing	g	0.16	0.16	0.16	0.16	1	1	1	1
Typical measurement time	s	≤2.0	≤2.0	≤2.0	≤2.0	≤1.5	≤1.5	≤1.5	≤1.5
Typical stabilization time	s	≤1.5	≤1.5	≤1.5	≤1.5	≤1.0	≤1.0	≤1.0	≤1.0
Recommended calibration weight									
External calibrated test weight	g	200	200	100	50	1,000	500	200	200
Accuracy class in accordance with OIML R111-1		E2	E2	E2	E2	E2	F1	F1	F1
Weighing pan size	mm	Ø 90	Ø 90	Ø 90	Ø 90	Ø 120	Ø 120	Ø 120	Ø 120
Weighing chamber height*	mm	240	240	240	240	240	240	240	240
Net weight, approx.	kg	6.20	6.20	6.20	6.20	6.30	6.30	6.30	6.30
Gross weight, approx.	kg	8.00	8.00	8.00	8.00	8.10	8.10	8.10	8.10

* upper edge of the weighing pan to the lower edge of the upper draft shield panel

¹ Country-specific marking in model:

x = S: Standard balances without country-specific additions

x = SAR: Standard balances with country-specific additions for Argentina

x = SJP: Standard balances with country-specific additions for Japan

x = SKR: Standard balances with country-specific additions for South Korea

x = CCN: Balances with approval for China

x = CEU: Conformity-assessed balances with EU type examination certificate without country-specific additions

x = CFR: Conformity-assessed balances with EU type examination certificate only for France

x = OBR: Balances with approval for Brazil

x = OIN: Balances with approval for India

x = OJP: Balances with approval for Japan

x = ORU: Balances with approval for Russia

223i-1x ¹	6202i-1x ¹	4202i-1x ¹	3202i-1x ¹	2202i-1x ¹	1202i-1x ¹	822i-1x ¹	12201i-1x ¹	10201i-1x ¹	8201i-1x ¹	5201i-1x ¹	2201i-1x ¹
1	10	10	10	10	10	10	100	100	100	100	100
220	6,200	4,200	3,200	2,200	1,200	820	12,200	10,200	8,200	5,200	2,200
EMC	EMC	EMC	EMC	EMC	EMC	EMC	EMC	EMC	EMC	EMC	EMC
0.5	5	5	5	5	5	5	50	50	50	50	50
1	10	10	10	10	10	10	100	100	100	50	50
2	20	20	20	20	20	20	100	100	100	100	100
0.6	6	6	6	6	6	6	60	60	60	60	60
2	2	2	2	2	2	2	4	4	4	2	2
<100% of maximum capacity											
2	2	2	2	2	2	2	2	2	2	2	2
6	6	6	6	6	6	6	6	6	6	6	6
II	II	II	II	II	II	II	II	II	II	II	II
BC-AD	BC-AE	BC-AE	BC-AE	BC-AE	BC-AE	BC-AE	BC-AG	BC-AG	BC-AG	BC-AE	BC-AE
10	100	100	100	100	100	100	1,000	1,000	1,000	100	100
20	500	500	500	500	500	500	5,000	5,000	5,000	5,000	5,000
0.82	8.2	8.2	8.2	8.2	8.2	8.2	82	82	82	82	82
1	10	10	10	10	10	10	100	100	100	100	100
≤1.5	≤1.0	≤1.0	≤1.0	≤1.0	≤1.0	≤1.0	≤1.0	≤1.0	≤1.0	≤1.0	≤1.0
≤1.0	≤0.9	≤0.9	≤0.9	≤0.9	≤0.9	≤0.9	≤0.9	≤0.9	≤0.9	≤0.9	≤0.9
200	5,000	2,000	2,000	2,000	1,000	500	10,000	10,000	5,000	5,000	2,000
F1	F1	F1	F1	F1	F1	F2	F2	F2	F2	F2	F2
Ø 120	182 x 182	182 x 182	182 x 182	182 x 182	182 x 182	182 x 182	182 x 182	182 x 182	182 x 182	182 x 182	182 x 182
240	-	-	-	-	-	-	-	-	-	-	-
6.30	6.20	6.20	6.20	6.20	6.20	6.20	6.20	6.20	6.20	6.20	6.20
8.10	7.00	7.00	7.00	7.00	7.00	7.00	7.00	7.00	7.00	7.00	7.00

Models without Internal Adjustment Feature, without Approval

Model BCA	Unit	224-1x ¹	124-1x ¹	64-1x ¹	623-1x ¹	423-1x ¹	323-1x ¹	223-1x ¹
Readability Scale interval (d)	mg	0.1	0.1	0.1	1	1	1	1
Maximum capacity (Max)	g	220	120	60	620	420	320	220
Weighing system		EMC	EMC	EMC	EMC	EMC	EMC	EMC
Repeatability								
At 5% load, typical value	± mg	0.08	0.08	0.08	0.5	0.5	0.5	0.5
At approx. maximum load, typical value	± mg	0.1	0.1	0.1	1	1	1	1
Linearity deviation								
Limits	± mg	0.2	0.2	0.2	2	2	2	2
Typical value	± mg	0.06	0.06	0.06	0.6	0.6	0.6	0.6
Sensitivity drift between +10° C and +30° C	± ppm/K	1	1	1	2	2	2	2
Tare maximum capacity (subtractive)		<100% of maximum capacity						
isoCAL (only for i-1x models):								
Temperature change	K	-	-	-	-	-	-	-
Time interval	h	-	-	-	-	-	-	-
For models with approval:								
Accuracy class		-	-	-	-	-	-	-
Type		-	-	-	-	-	-	-
Verification scale interval (e)	mg	-	-	-	-	-	-	-
Minimum load (Min)	mg	-	-	-	-	-	-	-
Minimum initial weighing according to USP (United States Pharmacopeia), Chap. 41								
Optimum minimum initial weighing	g	0.082	0.082	0.082	0.82	0.82	0.82	0.82
Typical minimum initial weighing	g	0.16	0.16	0.16	1	1	1	1
Typical measurement time	s	≤2.0	≤2.0	≤2.0	≤1.5	≤1.5	≤1.5	≤1.5
Typical stabilization time	s	≤1.5	≤1.5	≤1.5	≤1.0	≤1.0	≤1.0	≤1.0
Recommended calibration weight								
External calibrated test weight	g	200	100	50	500	200	200	200
Accuracy class in accordance with OIML R111-1		E2	E2	E2	F1	F1	F1	F1
Weighing pan size	mm	Ø 90	Ø 90	Ø 90	Ø 120	Ø 120	Ø 120	Ø 120
Weighing chamber height*	mm	240	240	240	240	240	240	240
Net weight, approx.	kg	5.90	5.90	5.90	5.90	5.90	5.90	5.90
Gross weight, approx.	kg	7.70	7.70	7.70	7.70	7.70	7.70	7.70

* upper edge of the weighing pan to the lower edge of the upper draft shield panel

¹ Country-specific marking in model:

x = S: Standard balances without country-specific additions

x = SAR: Standard balances with country-specific additions for Argentina

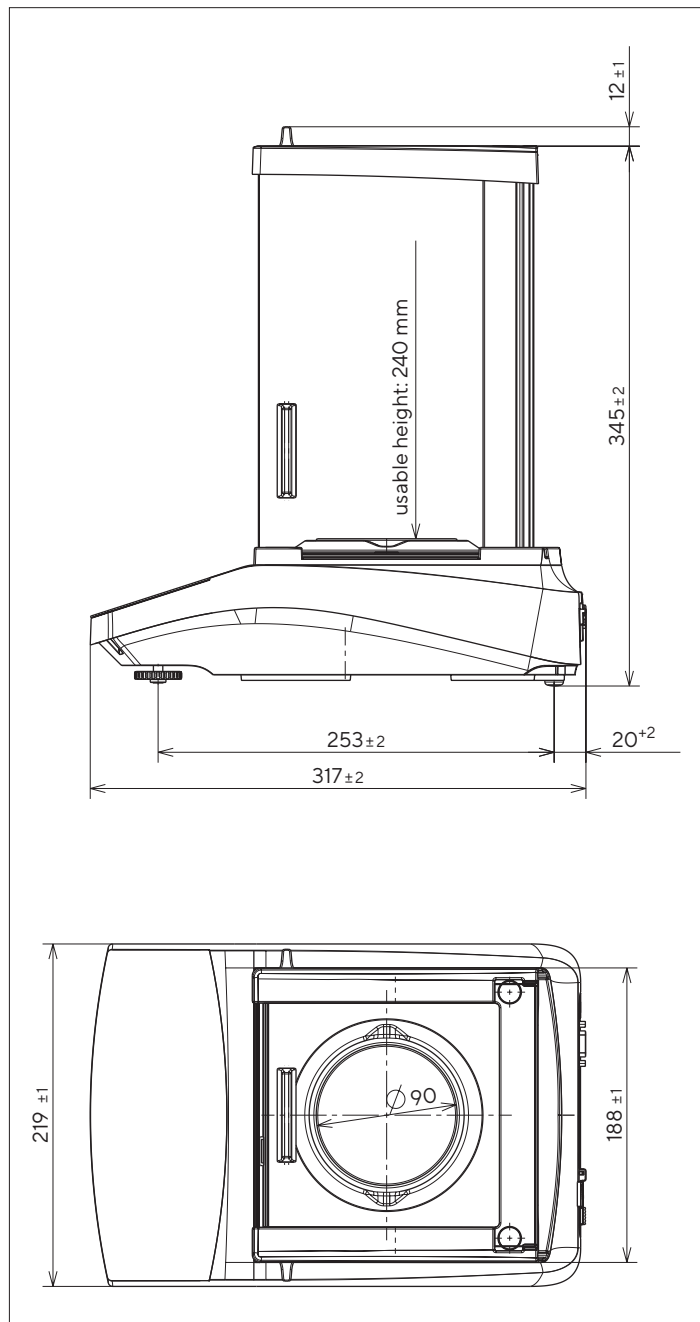
x = SJP: Standard balances with country-specific additions for Japan

x = SKR: Standard balances with country-specific additions for South Korea

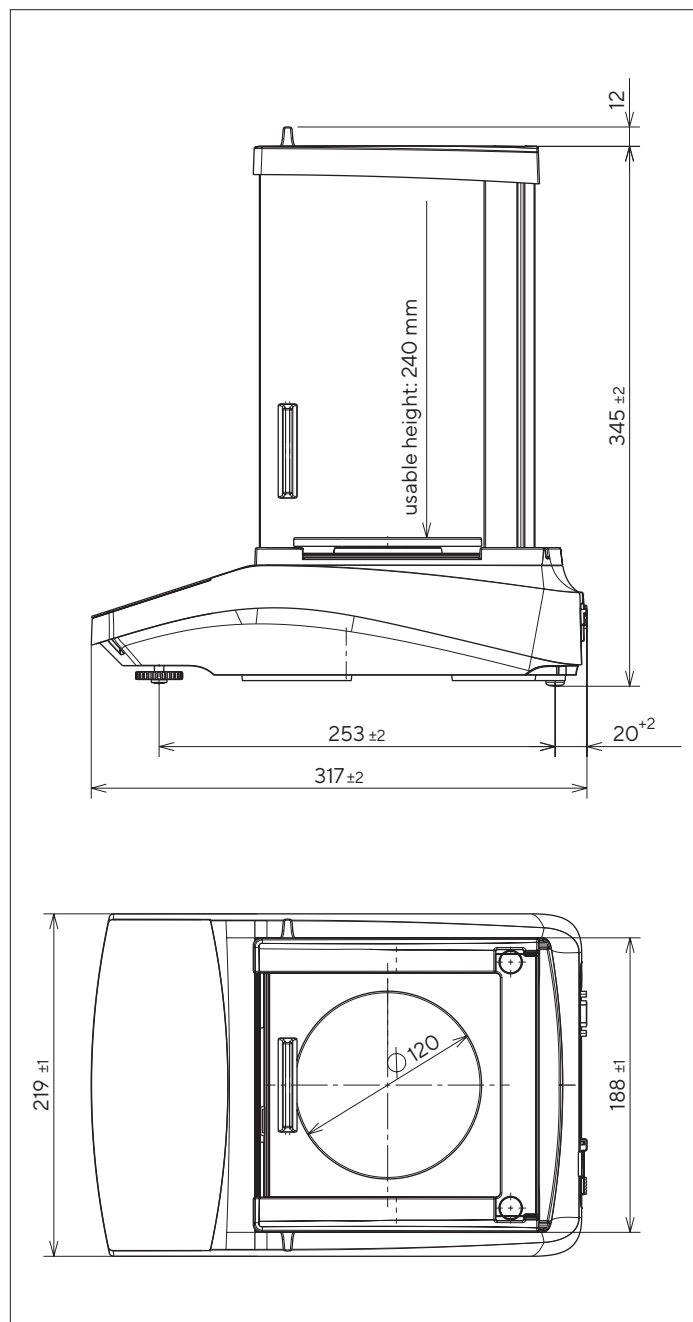
6202-1x ¹	4202-1x ¹	3202-1x ¹	2202-1x ¹	1202-1x ¹	822-1x ¹	12201-1x ¹	10201-1x ¹	8201-1x ¹	5201-1x ¹	2201-1x ¹
10	10	10	10	10	10	100	100	100	100	100
6,200	4,200	3,200	2,200	1,200	820	12,200	10,200	8,200	5,200	2,200
EMC	EMC	EMC	Strain gauge	Strain gauge	Strain gauge	EMC	EMC	Strain gauge	Strain gauge	Strain gauge
5	5	5	5	5	5	50	50	50	50	50
10	10	10	10	10	10	100	100	100	100	100
20	20	20	20	20	20	100	100	300	300	300
6	6	6	6	6	6	60	60	100	100	100
2	2	2	3.5	3.5	3.5	4	4	7	7	7
<100% of maximum capacity										
-	-	-	-	-	-	-	-	-	-	-
-	-	-	-	-	-	-	-	-	-	-
-	-	-	-	-	-	-	-	-	-	-
-	-	-	-	-	-	-	-	-	-	-
-	-	-	-	-	-	-	-	-	-	-
-	-	-	-	-	-	-	-	-	-	-
8.2	8.2	8.2	8.2	8.2	8.2	82	82	82	82	82
10	10	10	10	10	10	100	100	100	100	100
≤1.0	≤1.0	≤1.0	≤1.0	≤1.0	≤1.0	≤1.0	≤1.0	≤1.0	≤1.0	≤1.0
≤0.9	≤0.9	≤0.9	≤0.9	≤0.9	≤0.9	≤0.9	≤0.9	≤0.9	≤0.9	≤0.9
5,000	2,000	2,000	2,000	1,000	500	10,000	10,000	5,000	5,000	2,000
F1	F1	F1	F1	F1	F2	F2	F2	F2	F2	F2
182 x 182	182 x 182	182 x 182	182 x 182	182 x 182	182 x 182	182 x 182	182 x 182	182 x 182	182 x 182	182 x 182
-	-	-	-	-	-	-	-	-	-	-
4.60	4.60	4.60	4.30	4.30	4.30	4.60	4.60	4.30	4.30	4.30
5.10	5.10	5.10	5.10	5.10	5.10	5.10	5.10	5.10	5.10	5.10

Technical Drawings

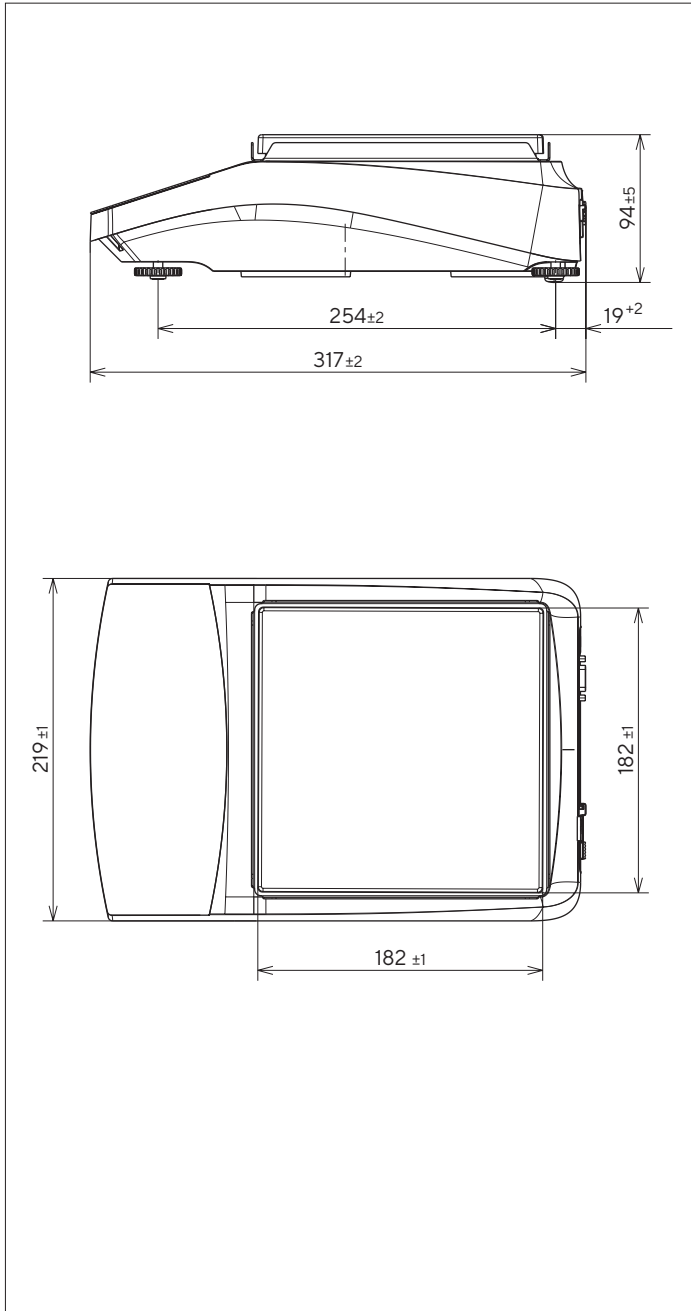
Models with a readability of 0.1 mg
All dimensions are given in millimeters



Models with a readability of 1 mg
All dimensions are given in millimeters



Models with a readability of ≥ 10 mg
All dimensions are given in millimeters



Accessories

These tables contain an excerpt of the accessories that can be ordered. For information on other products, contact Sartorius.

Balance Accessories

Item	Quantity	Order number
Display protection film (set of 5)	1	YDC10
Dust cover for balances with an analytical draft shield	1	6960BC01
Dust cover for balances with rectangular weighing pan	1	YDC30
In-use cover (set of 5)	1	YIC01
Density determination set for solids and liquids for balances with a readability of 0.1 mg 1 mg	1	YDK03
“Kensington Lock” anti-theft device	1	YKL01
Pedal button foot switch	1	YFS03
Second display remote display	1	YSD01
Below-balance weighing (not for models in legal metrology)		
Hook M5	1	69EA0039
Weighing table		
Made from wood with natural stone	1	YWT09
Made from natural stone, with vibration dampening	1	YWT03
Wall console made from natural stone	1	YWT04
Converter cable 5 V _{DC} > 15 V _{DC}	1	YCC-5V-15V

Printer and Accessories for Data Communication

Item	Quantity	Order number
Thermal printer (USB-B)	1	YDP40
Thermal transfer printer (USB-B, RS232)	1	YDP30
Dot matrix printer (RS232)*	1	YDP20-OCE
Data cable USB-C > USB-B (>YDP30, YDP40)	1.5 m	YCC-USB-C-B
Data cable USB-C > USB-A (>PC)	1.5 m	YCC-USB-C-A
Data cable RS232 (9-pin) > USB-A (>PC)	1.5 m	YCC-DO9M-USB-A
Data cable RS232 (9-pin) male > RS232 (9-pin) male (> YDP30)	1.5 m	YCC-DO9MM
Data cable RS232 (9-pin) male > RS232 (9-pin) female (>YDP20-OCE, YSD01)	1.5 m	YCC-DO9MF
Y-adaptor RS232 (9-pin) male > 2x RS232 (9-pin) female	0.15 m	YCC-DO9M-2DO9F

*additional power supply e.g. YEPS01-PS4 or YEPS01-PS5 is required

External Calibration and Adjustment Weights

BCA model	Weight	Accuracy class	Order number
324 224	200 g	E2	YCW522-AC-02
124	100 g	E2	YCW512-AC-02
64	50 g	E2	YCW452-AC-02
1203	1,000 g	E2	YCW612-AC-02
623	500 g	F1	YCW553-AC-02
423 323 223	200 g	F1	YCW523-AC-02
6202	5,000 g	F1	YCW653-AC-02
4202 3202 2202	2,000 g	F1	YCW623-AC-02
1202	1,000 g	F1	YCW613-AC-02
822	500 g	F2	YCW554-AC-02
12201 10201	10,000 g	F2	YCW714-AC-02
8201 5201	5,000 g	F2	YCW654-AC-02
2201	2,000 g	F2	YCW624-AC-02

Sales and Service Contacts

For further contacts, visit
www.sartorius.com

Germany

Sartorius Lab Instruments
GmbH & Co. KG
Otto-Brenner-Strasse 20
37079 Goettingen
Phone +49 551 308 0

USA

Sartorius Corporation
565 Johnson Avenue
Bohemia, NY 11716
Phone +1 631 254 4249
Toll-free +1 800 635 2906

Entris® II Balanzas de laboratorio



Entris® II – el mejor valor en su clase para tareas de pesaje básicas

Cada balanza de Sartorius ofrece calidad, valor y consistencia.

No importa lo que esté pesando, la nueva Entris® II es siempre la elección correcta ya que le ofrece unas especificaciones incomparables a un precio económico, esta es la única balanza en su segmento que dispone de isoCAL, tecnología táctil LED y 12 aplicaciones integradas. Con el respaldo de casi 150 años de experiencia en ingeniería alemana y disponible en 40 modelos diferentes, encontrará fácilmente una balanza Entris® II que satisfaga exactamente sus necesidades específicas de pesaje.



Para más información, por favor visite
www.sartorius.com

Calidad, valor y consistencia

Para resultados de pesaje precisos, puede confiar una y otra vez

Los más altos estándares de calidad diseñados en Alemania

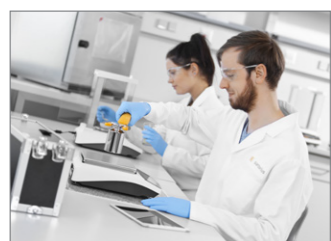
- Resultados altamente precisos año tras año
 - Garantizados gracias a la tecnología de pesaje monolítico inventada por Sartorius.*
- El tiempo de estabilización más rápido de su clase.
 - utilizando sensores de pesaje de última generación
- Mejor repetibilidad
 - con plato de pesaje rectangular
- Protección de sobrecarga
 - El diseño robusto para pesar hasta una cantidad preestablecida
- Fiabilidad garantizada
 - Con la autocomprobación @start"
- Fabricada en Alemania

Fácil limpieza para una eficiencia operativa y total durabilidad

- Alta resistencia química
 - Asegurada usando partes hechas de tereftalato de polibutileno (PBT) resistente, acero inoxidable y vidrio.
- Previene la contaminación cruzada
 - Con diseño limpio y piezas fáciles de quitar

Camara de pesaje efectiva

- Minimiza los errores de pesaje causados por muestras cargadas electrostáticamente.
 - utilizando piezas de vidrio especialmente revestidas



* puede diferir en algunos modelos



Para más información, por favor visite www.sartorius.com



Innovaciones en esta clase de pesaje

Para una operación eficiente y fácil de usar

isoCAL (calibración y ajuste interno) para una total garantía de resultados de pesaje precisos

- Precisión óptima y conveniencia operativa: uso totalmente automatizado
 - Función de ajuste y calibración interna automática por variaciones de temperatura o después de un intervalo de tiempo (única en esta clase de pesaje)
- Garantía y conformidad operacional (SOP)
 - con auto-notificación si la calibración está fuera del rango normal

Pantalla híbrida para una excelente legibilidad y uso

- Combina tecnología táctil e intuitiva, resistente al desgaste y LED
 - Proporciona una interfaz de usuario estructurada fácil y clara

Conveniencia plug-and-play

- Detecta automáticamente los accesorios de Sartorius (por ejemplo, impresora, segunda pantalla)
- La "Función PC Direct" para una conexión real y fácil con el ordenador transfiriendo datos de pesaje directamente a hojas de cálculo o documentos como Microsoft® Excel o Word

Salida de datos para aplicaciones de pesaje dinámico

- Intervalo de tiempo configurable para la salida de datos

Se adapta fácilmente a sus condiciones ambientales

- Con un solo clic en la pantalla de inicio



Aplicación universal

Para una garantía de futuro

El modelo adecuado para cada tarea.

- Ofrece una gama de 40 modelos (la serie más grande de su clase), con capacidades desde 60 g hasta 8200 g y legibilidades desde 0,1 mg a 1 g. Encontrar el modelo más adecuado a su aplicación de pesaje es simple.

12 aplicaciones integradas con impresión o salida de datos conforme GLP / GMP

- Pesaje | Dosificación
- Contaje de piezas
- Pesaje en porcentaje
- Mezclado | Total neto
- Componentes | Totalización
- Pesaje de animales
- Cálculo | Factor libre
- Determinación de la densidad
- Estadística
- Retención de pico
- Control de peso
- Conversión da otras unidades de medida de masa
- y pesaje por debajo de la balanza para muestras más grandes

Características para pesar muestras voluminosas

- La altura de la cámara de pesaje es más alta para un fácil manejo de contenedores grandes
- Acceso conveniente al plato de pesaje
- Puertas deslizantes laterales y superior fáciles de remover
- El protector contra corrientes de aire se puede quitar completamente

8 idiomas incorporados para una operación internacional

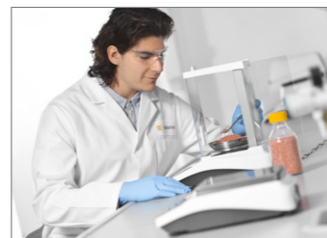
- Inglés, alemán, francés, italiano, español, portugués, ruso, polaco

Métodos de conectividad modernos y actualizados

- Interfaz USB tipo C preparada para el futuro
- Interfaz RS232 de 9 pines a prueba de industria
- Compatibilidad con versiones anteriores (utilizando el puerto RS232)

Protección con contraseña para una operación segura

- Protege la balanza contra cambios involuntarios



Entris® II Especificaciones técnicas

Modelo	Capacidad máxima	Legibilidad	Repetibilidad típica	Tiempo de estabilización típico	Tamaño del plato de pesaje	Altura de la cámara de pesaje*	Dimensiones (A x L x L)	Calibración y ajuste	
	[g]	[mg]	[mg]	[s]	[mm]	[mm]	[mm]	Interno	Externo
Balanzas analíticas									
BCE64i-1x	60	0,1	0,1	≤ 1,5	Ø 90	240	219×317×345	•	•
BCE64-1x	60	0,1	0,1	≤ 1,5	Ø 90	240	219×317×345	-	•
BCE124i-1x	120	0,1	0,1	≤ 1,5	Ø 90	240	219×317×345	•	•
BCE124-1x	120	0,1	0,1	≤ 1,5	Ø 90	240	219×317×345	-	•
BCE224i-1x	220	0,1	0,1	≤ 1,5	Ø 90	240	219×317×345	•	•
BCE224-1x	220	0,1	0,1	≤ 1,5	Ø 90	240	219×317×345	-	•
Balanzas de precisión									
BCE223i-1x	220	1	1	≤ 1,0	Ø 120	240	219×317×345	•	•
BCE223-1x	220	1	1	≤ 1,0	Ø 120	240	219×317×345	-	•
BCE323i-1x	320	1	1	≤ 1,0	Ø 120	240	219×317×345	•	•
BCE323-1x	320	1	1	≤ 1,0	Ø 120	240	219×317×345	-	•
BCE423i-1x	420	1	1	≤ 1,0	Ø 120	240	219×317×345	•	•
BCE423-1x	420	1	1	≤ 1,0	Ø 120	240	219×317×345	-	•
BCE623i-1x	620	1	1	≤ 1,0	Ø 120	240	219×317×345	•	•
BCE623-1x	620	1	1	≤ 1,0	Ø 120	240	219×317×345	-	•
BCE653i-1x	650	1	1	≤ 1,0	Ø 120	50	219×317×145	•	•
BCE653-1x	650	1	1	≤ 1,0	Ø 120	50	219×317×145	-	•
BCE622i-1x	620	10	10	≤ 0,9	182×182	-	219×317×94	•	•
BCE622-1x	620	10	10	≤ 0,9	182×182	-	219×317×94	-	•
BCE822i-1x	820	10	10	≤ 0,9	182×182	-	219×317×94	•	•
BCE822-1x	820	10	10	≤ 0,9	182×182	-	219×317×94	-	•
BCE1202i-1x	1.200	10	10	≤ 0,9	182×182	-	219×317×94	•	•
BCE1202-1x	1.200	10	10	≤ 0,9	182×182	-	219×317×94	-	•
BCE2202i-1x	2.200	10	10	≤ 0,9	182×182	-	219×317×94	•	•
BCE2202-1x	2.200	10	10	≤ 0,9	182×182	-	219×317×94	-	•
BCE3202i-1x	3.200	10	10	≤ 0,9	182×182	-	219×317×94	•	•
BCE3202-1x	3.200	10	10	≤ 0,9	182×182	-	219×317×94	-	•
BCE4202i-1x	4.200	10	10	≤ 0,9	182×182	-	219×317×94	•	•
BCE4202-1x	4.200	10	10	≤ 0,9	182×182	-	219×317×94	-	•
BCE6202i-1x	6.200	10	10	≤ 0,9	182×182	-	219×317×94	•	•
BCE6202-1x	6.200	10	10	≤ 0,9	182×182	-	219×317×94	-	•
BCE2201i-1x	2.200	100	100	≤ 0,9	182×182	-	219×317×94	•	•
BCE2201-1x	2.200	100	100	≤ 0,9	182×182	-	219×317×94	-	•
BCE5201i-1x	5.200	100	100	≤ 0,9	182×182	-	219×317×94	•	•
BCE5201-1x	5.200	100	100	≤ 0,9	182×182	-	219×317×94	-	•
BCE8201i-1x	8.200	100	100	≤ 0,9	182×182	-	219×317×94	•	•
BCE8201-1x	8.200	100	100	≤ 0,9	182×182	-	219×317×94	-	•
BCE6200i-1x	6.200	1.000	1.000	≤ 0,9	182×182	-	219×317×94	•	•
BCE6200-1x	6.200	1.000	1.000	≤ 0,9	182×182	-	219×317×94	-	•
BCE8200i-1x	8.200	1.000	1.000	≤ 0,9	182×182	-	219×317×94	•	•
BCE8200-1x	8.200	1.000	1.000	≤ 0,9	182×182	-	219×317×94	-	•

* borde superior del plato de pesaje al borde inferior del protector contra corrientes superior
x = terminación para modelos específicos del país



Para más información, por favor visite www.sartorius.com

Contactos de ventas y servicios

Para más contactos, visite www.sartorius.com

Europe

Germany

Sartorius Lab Instruments
GmbH & Co. KG
Otto-Brenner-Strasse 20
37079 Goettingen
Phone +49.551.308.0

France & Suisse Romande

Sartorius France
2, rue Antoine Laurent de Lavoisier
ZA de la Gaudrée
91410 Dourdan
Phone +33.1.70.62.50.00

Austria

Sartorius Austria GmbH
Modecenterstrasse 22
1030 Vienna
Phone +43.1.7965760.0

Belgium

Sartorius Belgium N.V.
Rue Colonel Bourg 105
1030 Bruxelles
Phone +32.2.756.06.90

Finland & Baltics

Sartorius Biohit Liquid Handling Oy
Laippatie 1
00880 Helsinki
Phone +358.9.755.951

Hungary

Sartorius Hungária Kft.
Kagyló u. 5.
2092 Budakeszi
Phone +3623.457.227

Ireland

Sartorius Ireland Ltd.
Unit 41, The Business Centre
Stadium Business Park
Ballycoolin Road
Dublin 11
Phone +353.1.8089050

Italy

Sartorius Italy S.r.l.
Via Torino 3/5
20814 Varedo (MB)
Phone +39.0362.5557.11

Netherlands

Sartorius Netherlands B.V.
Phone +31.30.60.53.001
info.netherlands@sartorius.com

Poland

Sartorius Poland sp.z o.o.
ul. Wrzesinska 70
62-025 Kostrzyn
Phone +48.61.6473830

Russian Federation

LLC "Sartorius RUS"
Vasilyevsky Island
5th line 70, Lit. A
199178 St. Petersburg
Phone +7.812.327.53.27

Spain & Portugal

Sartorius Spain, S.A.
Avda. de la Industria, 32
Edificio PAYMA
28108 Alcobendas (Madrid)
Phone Spain +34.913.586.095
Phone Portugal +351.800.855.800

Switzerland

Sartorius Mechatronics Switzerland AG
Ringstrasse 24a
8317 Tagelswangen (ZH)
Phone +41.44.746.50.00

U.K.

Sartorius UK Ltd.
Longmead Business Centre
Blenheim Road, Epsom
Surrey KT19 9QQ
Phone +44.1372.737159

Ukraine

LLS "Sartorius RUS"
Post Box 440 "B"
01001 Kiev, Ukraine
Phone +380.44.411.4918

Para mas informacion, consulte nuestro catalogo y lista de precios o visite nuestra pagina web.

Americas

USA

Sartorius Corporation
565 Johnson Avenue
Bohemia, NY 11716
Phone +1.631.254.4249
Toll-free +1.800.635.2906

Argentina

Sartorius Argentina S.A.
Int. A. Avalos 4251
B1605ECS Munro
Buenos Aires
Phone +54.11.4721.0505

Brazil

Sartorius do Brasil Ltda
Avenida Senador Vergueiro 2962
São Bernardo do Campo
CEP 09600-000 - SP- Brasil
Phone +55.11.4362.8900

Canada

Sartorius Canada Inc
1173 North Service Road West, D4
Oakville, ON L6M 2V9
Phone +1.905.569.7977
Toll-Free +1.800.668.4234

Mexico

Sartorius de México, S.A. de C.V.
Libramiento Norte de Tepotzotlan s/n,
Colonia Barrio Tlacateco,
Municipio de Tepotzotlan,
Estado de México,
C.P. 54605
Phone +52.55.5562.1102
leadsmex@sartorius.com

Asia|Pacific

Australia

Sartorius Australia Pty. Ltd.
Unit 5, 7-11 Rodeo Drive
Dandenong South Vic 3175
Phone +61.3.8762.1800

China

Sartorius (Shanghai) Trading Co., Ltd.
3rd Floor, North Wing, Tower 1
No. 4560 Jinke Road
Zhangjiang Hi-Tech Park
Pudong District
Shanghai 201210, P.R. China
Phone +86.21.6878.2300

Hong Kong

Sartorius Hong Kong Ltd.
Unit 1012, Lu Plaza
2 Wing Yip Street
Kwun Tong
Kowloon, Hong Kong
Phone +852.2774.2678

India

Sartorius Weighing India Pvt. Ltd.
#69/2-69/3, NH 48, Jakkasandra,
Nelamangala Tq
562 123 Bangalore, India
Phone +91.80.4350.5250

Japan

Sartorius Japan K.K.
4th Fl., Daiwa Shinagawa North Bldg.
8-11, Kita-Shinagawa 1-chome
Shinagawa-ku, Tokyo, 140-0001 Japan
Phone +81.3.3740.5408

Malaysia

Sartorius Malaysia Sdn. Bhd
Lot L3-E-3B, Enterprise 4
Technology Park Malaysia
Bukit Jalil
57000 Kuala Lumpur, Malaysia
Phone +60.3.8996.0622

Singapore

Sartorius Singapore Pte. Ltd
10 Science Park Rd
The Alpha #02-13/14
Singapore Science Park II
Singapore 117684
Phone +65.6872.3966

South Korea

Sartorius Korea Ltd.
8th Floor, Solid Space B/D,
PanGyoYeok-Ro 220, BunDang-Gu
SeongNam-Si, GyeongGi-Do, 463-400
Phone +82.31.622.5700

Thailand

Sartorius (Thailand) Co. Ltd.
129 Rama 9 Road,
Huaykwang
Bangkok 10310
Phone +66.2643.8361-6



◀ www.sartorius.com