

www.awaretech.com

ChemWell® 2902

Programmable Open System

Fully Automated Biochemistry Analyzer



Deliver Biochemistry Results With Confidence

 **AWARENESS**
TECHNOLOGY, INC.

Fully Automated Biochemistry Programmable Analyzer

Typical throughput	Up to 200 endpoint reactions per hour, up to 170 kinetic reactions per hour
Typical reaction Volume	200 μ L or less
Min. and Max. pipetting volume	2 μ L - 1.95 mL
Precision for volumes <5 μL	<2.5% CV
Precision for volume >5 μL	<1% CV
Maximum number of specimens	96 (including calibrators and controls)
Maximum number of reagents	Typically 27 to 44
Standard reagent rack	27 positions, other configurations optional
Reaction vessel	Standard microwell plates or strips
Thermal control	Well, probe, and tubing; ambient or 37° C (other options available)
Reagent cooling	RCA, Reagent Cooling Accessory (optional) cools 10° to 15° C below ambient through Peltier thermoelectric modules connected to an external controller
Optical design	Reads absorbance in four channels simultaneously User-selected monochromatic or bichromatic results 8 position filter wheel : 340 nm - 700 nm
Calculation modes	Single standard, factor, fixed time kinetics, kinetics by standard or factor, multi-calibrator point-to-point, linear regressions, log-logit, cubic spline, and nonlinear regressions (curve fit)
Photometric Accuracy	\pm (1% of the reading +0.005 A from 0 to 1.0 A) \pm (2% of the reading +0.005 A from 1.0 to 3.0 A)
Dimensions & Weight	66 cm W x 51 cm L x 40 cm H Approx. weight = 35 kg 34" W x 20" L x 16" H Approx. weight = 77 lbs



Awareness Technology, Inc. USA & INTERNATIONAL:
1935 S.W. Martin Hwy., Palm City, FL 34990, USA
tel.: +1 772 283 6540, fax: +1 772 283 8020
info@awaretech.com

Awareness Technology, Inc. EUROPE:
Franz-Siegel-Gasse 1, 2380, Perchtoldsdorf, Austria
tel.: +43 (1) 804 81 84, fax: +43 (1) 804 81 85
info@awaretech.eu

Awareness Technology, Inc. ASIA & AFRICA
Q3-146, SAIF Zone, 120543, Sharjah, United Arab Emirates
tel.: +971 (06) 557 80 58, fax: +971 (06) 557 80 59
info@awaretech.com



ISO 13485:2016

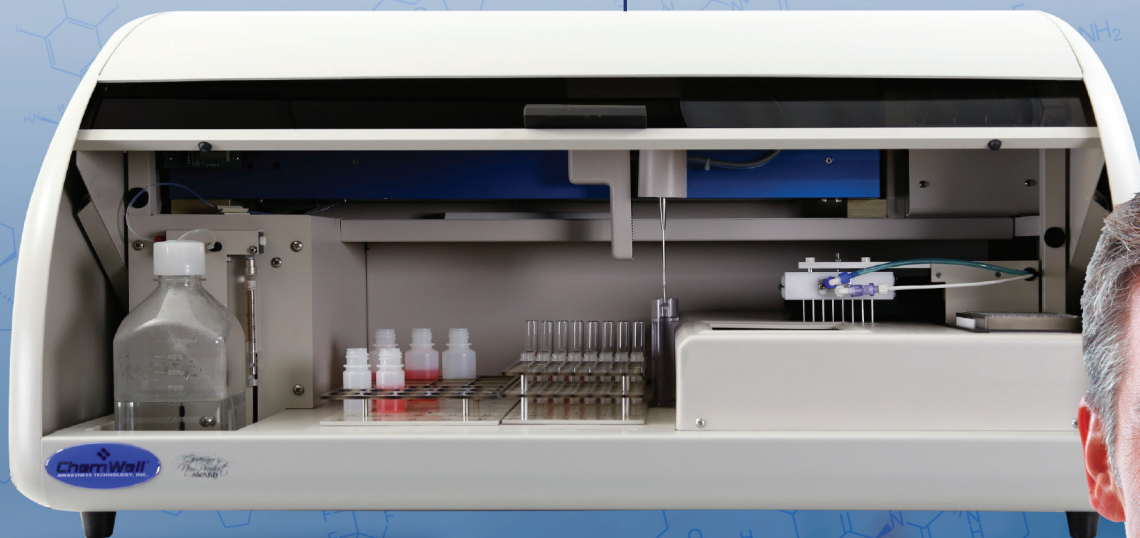


www.awaretech.com

ChemWell® 2910

Programmable Open System

Automated ELISA/Biochemistry Analyzer

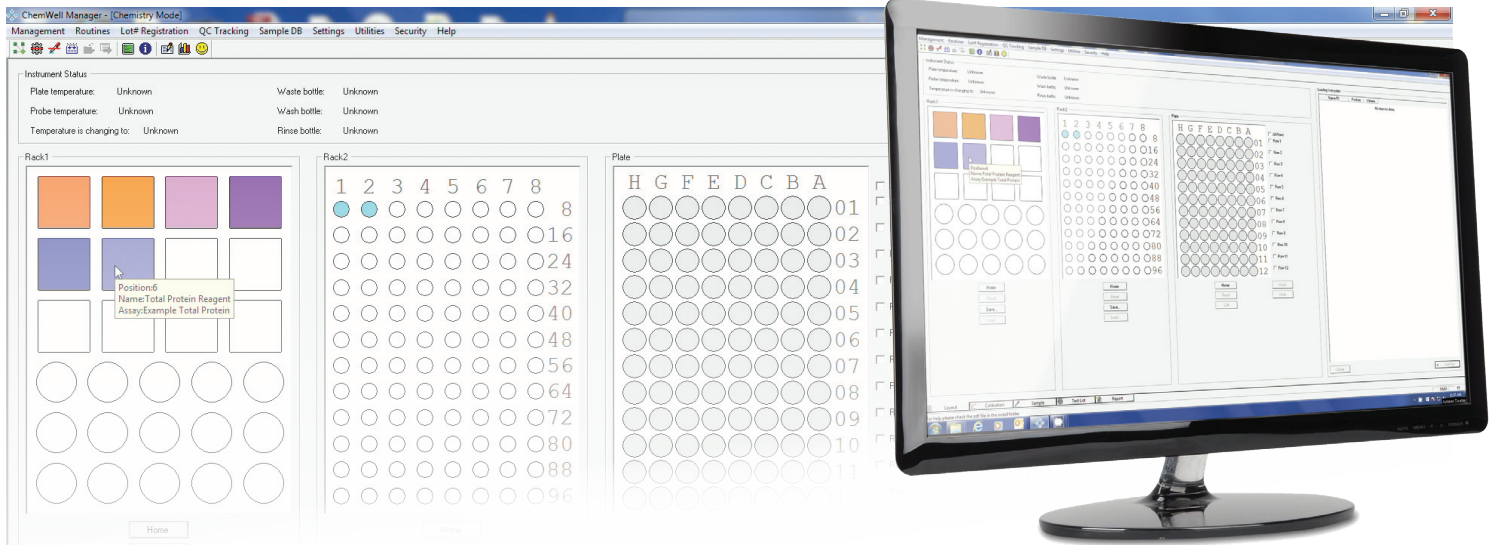


- Accurate results, dependable performance
- Automated analyzer for microwell based ELISA or Biochemistry
- Versatile open system
- Cost-effective operation

The Ultimate In Flexibility



 **AWARENESS**
TECHNOLOGY, INC.



Graphic Interface for Visual Reference that mirrors the process stages of the analyzer.

ChemWell 2910, Fully Automated Computer Controlled, User Programmable, Open System Analyzer, Is Two Systems In One!

ELISA Mode

- Analyze ELISA assays in standard 96 well coated Microplate
- Mix multiple assays on a single plate even if timing is different
- Multiple calculation modes

Biochemistry Mode

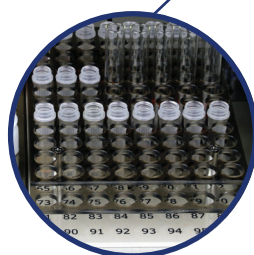
- Analyze chemistry assays in standard 96 well uncoated microwells
- Random access kinetic and endpoint assays
- 200 Tests per hour

ChemWell 2910 Provides:

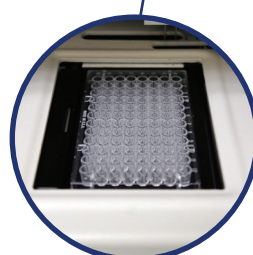
- ◆ Ability to process microwell based ELISA or biochemistry assays using the same analyzer
- ◆ An open system with user definable ability to program any assay menu
- ◆ Customizable and expandable protocols
- ◆ Proven technology and performance - True walk away capabilities
- ◆ World class customer support
- ◆ Ease of operation through intuitive design
- ◆ User friendly Assay Editor System software that prevents process timing conflicts
- ◆ Flexible placement of reagent and samples for optimization
- ◆ Complete patient database available with search and tracking system
- ◆ Flexible reporting options including export to excel or LIS



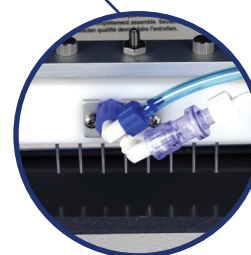
Reagent Rack
up to 44 Reagents



Sample Rack
96 Samples



Reaction Vessel



Washer

ChemWell®

Versatile • Flexible • Reliable • Accurate • Programmable • ELISA & Biochemistry Analyzer

The Ultimate in Flexibility

The same instrument that automatically processes microwell based ELISA tests, is also a fully automated 200 test per hour routine biochemistry analyzer. The two in one functionality makes ChemWell 2910 an ideal addition to any laboratory that is looking to maximize efficiency, savings, and improve productivity without sacrificing valuable benchtop work space.

Key ChemWell® 2910 Features:

- ◆ On Board Pre-dilution Options in the Rack or Plate
- ◆ Fluid Handling - aspirates and dispenses from 2 μ L to 1.95 mL
- ◆ On-Board programming for work flow optimization
- ◆ On-Board storage of QC, calibrator data and Levey-Jennings
- ◆ 8 Filter wheel with 340 nm – 700 nm Range
- ◆ On-Board Plate Washer, Mixer and Incubation
- ◆ Self-cleaning liquid sensing probe
- ◆ Security Lock Out Options - Data Archive - unlimited capacity
- ◆ Create a repository of programmed assays using the included assay editor



Automated ELISA or Biochemistry Programmable Analyzer

Typical Biochemistry throughput	Up to 200 endpoint reactions per hour, up to 170 kinetic reactions per hour
Min. and Max. pipetting volume	2 μ L - 1.95 mL
Precision for volumes <5 μL	<2.5% CV
Precision for volume >5 μL	<1% CV
Maximum number of specimens	96 (including calibrators and controls)
Maximum number of reagents	Typically 27 to 44
Standard reagent rack	27 positions, other configurations optional
Reaction vessel	Standard microwell plates or strips
Instrument bottles	2L wash 1L rinse (or second wash) 2L waste bottle 1L priming bottle
Thermal control	Incubation timing is software controlled and automatically optimized Well, probe and tubing; ambient or 37°C (other options available)
Wash head	8-probe, automatic prime and rinse
Programs	Wash protocols are user-programmable for aspirate, dispense, soak, mix
Light Source	Tungsten-Xenon lamp
Optical design	Reads bichromatic absorbance in four channels, user-selected monochromatic or bichromatic results 8 position filter wheel : 340 - 700 nm
Photometric accuracy	\pm (1% of the reading +0.005A from 0 to 1.0A) \pm (2% of the reading from 1.0 to 3.0A)
Software format	USB thumb drive and Internet upgrades
Supported operating systems	Windows® 7, 8 and 10
Minimum system requirements	Operating System dependent* please see Windows® system requirements
Calculation modes	Single standard, factor, fixed time kinetics, kinetics by standard or factor, qualitative absorbance cutoff calculations, multi-calibrator point-to-point, linear regressions, log-logit, cubic spline, and nonlinear regressions (curve fit)
LIS integration	LIS compatible, patient database stores test results
Dimensions & weight	92.075 cm W. x 54.61 cm D. x 47.3075 cm H. Approx. weight = 35 kg 36.250" W. x 21.500" D. x 18.625" H. Approx. weight = 77 lbs (Allow additional 6" W for waste and wash containers)

ISO 13485:2016



AWARENESS
TECHNOLOGY, INC.
www.awaretech.com

Awareness Technology, Inc. USA & International
tel: +1 772 283 6540 sales@awaretech.com

Awareness Technology, Inc. Europe
tel: +43 (0) 2236 892465 info@awaretech.eu

Awareness Technology, Inc. Asia & Africa
tel: +971 (06) 557 80 58 info@awaretech.com



Optional Reagent Cooling Accessory
Maintains reagents at 12°C to 15°C below
ambient temperature

Automated ELISA & Chemiluminescence Programmable Analyzer

Min. and Max. volume	2 µL - 1.95 mL
Precision for volumes <5 µL	<2.5% CV
Precision for volume >5 µL	<1% CV
Maximum number of specimens	96 (including calibrators and controls)
Maximum number of reagents	Typically 27 or 44
Standard reagent rack	27 positions, other configurations optional
Reaction vessel	Standard 96 well microwell plates or strips
Instrument bottles	1 L Priming bottle 2 L wash 1 L rinse (or second wash) 2 L waste bottle
Thermal control	Plate/Well 25 °C, 37 °C, or ambient temperature Temperature controlled to 25 °C providing the ambient room temperature is below 25 °C
Wash head Programs	8-probe, automatic prime and rinse Wash protocols are user programmable for aspirate, dispense, soak, mix
Reading	Glow luminescence & absorbance
Light Source	Halogen Lamp
Spectral range	340 - 700 nm
ELISA absorbance	405, 450, 492, and 630 nm
Photometric accuracy	± (1% of the reading +0.005A from 0 to 1.5A) ± (2% of the reading from 1.5 to 3.0A)
Software format	CD-ROM and Internet upgrades
Supported operating systems	Windows® 7, 8 and 10
Minimum system requirements	Operating System dependent* please see Windows® system requirements
Calculation modes	Absorbance, single standard, factor, multi-calibrator point-to-point, linear regressions, log-logit, cubic spline, and nonlinear regressions (curve fit), RLU
LIS integration	LIS compatible, patient database stores test results
Dimensions & weight	92.075 cm W. x 54.61 cm L. x 47.3075 cm H. Approx. weight = 35 kg 36.250" W. x 21.500" L. x 18.625" H. Approx. weight = 77 lbs (Allow additional 6" W for waste and wash containers)

 **AWARENESS**
TECHNOLOGY, INC.
www.awaretech.com

Awareness Technology, Inc. USA & International
tel: +1 772 283 6540 fax: +1 772 283 8020

Awareness Technology, Inc. Europe
tel: +43 (0) 2236 892465 fax: +43 (0) 2236 892464

Awareness Technology, Inc. Asia & Africa
tel: +971 (06) 557 80 58 fax: +971 (06) 557 80 59

ISO 13485:2016



314800B

sales@awaretech.com

ChemWell® Fusion

Programmable Open System

Automated ELISA & CLIA Analyzer

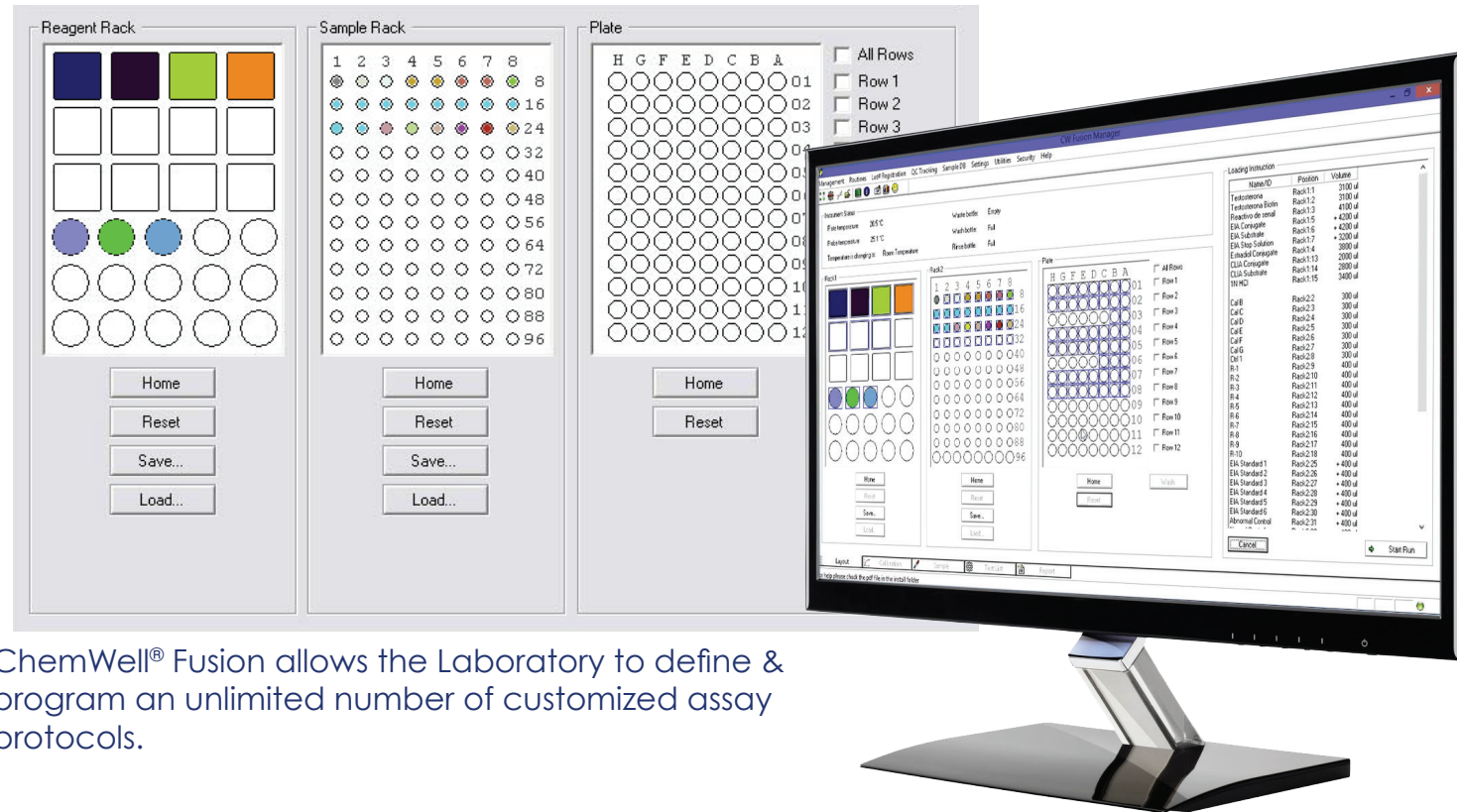


Deliver Results With Confidence

- Accurate results, dependable performance
- Automated analyzer for microwell based ELISA or CLIA
- Versatile open system
- Cost-effective operation

 **AWARENESS**
TECHNOLOGY, INC.

The ChemWell® FUSION Advantage



ChemWell® Fusion allows the Laboratory to define & program an unlimited number of customized assay protocols.

Three easy steps to reliable results

1. Enter or download patient data, request test with calibration and QC options.
2. Load samples and reagents.
3. ChemWell automatically processes the workload, monitoring reagent and sample supply, and presents results for review, printing and storage.



Processes CLIA and ELISA assays on the same microwell plate or run full plates for dedicated testing

- ChemWell Fusion is an open system adaptable to ELISA and glow-type CLIA applications.
- ChemWell Fusion provides pre-dilution options, mixing, variable incubation, plate washing, total pipetting functions, the software times the addition of conjugates, substrates and stop solutions while monitoring sample and reagent volumes as well as other parameters to assure precise, reliable results.
- ChemWell Fusion is a fully automated immunoassay processor with a unique optical system that automatically reads both colorimetric and chemiluminescent assays.
- The instrument holds a 96 microwell plate or up to twelve 8-well strips.
- Each row in a microwell plate can run a different test even if the incubation times, wash cycles, and read modes are different. Smart software avoids timing conflicts.
- Assay applications can be programmed to create and store password protected menu of test protocols.

- Ease of operation through intuitive design
- Integrated precision pipetting & microwell plate washing
- The ability to run both ELISA & CLIA on the same microwell strip plate
- Intelligent software that prevents timing conflicts
- Complete patient database with search and history tracking system
- Flexible reporting options including export to excel or LIS
- Customizable reagent and sample placement offering flexibility
- An open system, with the ability to program any assay Lockout security protection options
- Simplified maintenance

Reagent Rack - Accommodates 27 reagent bottles of various sizes

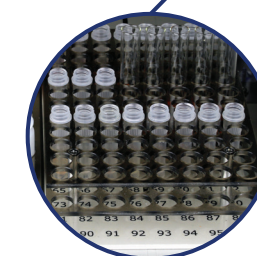
Sample Rack - 96 samples may be loaded

Reaction Chamber - Light-tight microwell plate reaction chamber for processing both CLIA and ELISA assays

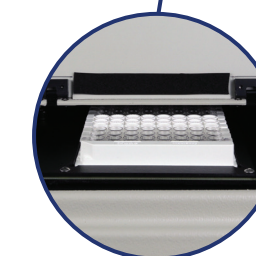
Plate Washer - 8 manifold wash head provides on-board plate washing capability



Reagent Rack



Sample Rack



Reaction Chamber

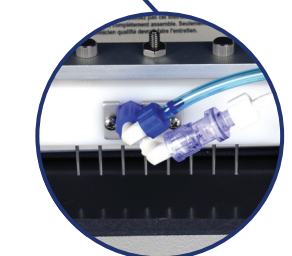


Plate Washer

ChemWell®-RPR

Automated Analyzer

Reagent

ChemWell-RPR 480 Test Kit

1 x 20 ml bottle of carbon antigen, 10 x 48 well microwell plates

ChemWell-RPR 4800 Test Kit

10 x 20 ml bottle of carbon antigen, 100 x 48 well microwell plates

ChemWell-RPR Titer Diluent

20 ml bottle

Quality Controls

ChemWell-RPR Control Set

2.5 ml each

Reactive / Weak Reactive / Nonreactive

ChemWell-RPR Control Set

5 ml each

Reactive / Weak Reactive / Nonreactive

Specifications

Two modes

- Automated Qualitative screening
- Titer for therapeutic monitoring 1:2048 Dilution

Recommended Environmental Conditions

- Operating Temperature: 18°C - 35°C
- Operating Humidity: Less than 85% recommended

Physical Specifications

- 36.25" W x 18.75" L x 21.5" H Approx. weight 77 lbs.
- 92.1 cm W x 47.6 cm L x 54.6 cm H Approx. weight 35 kg

Environmental Conditions

- Indoor Use
- Main Supply Voltage: Fluctuations not to exceed $\pm 10\%$ of nominal voltage
- Altitude: Up to 2000 m
- Temperature: 5°C to 40°C, may vary depending on reagent temperature requirements



Awareness Technology, Inc. USA & International
tel: +1 772 283 6540 fax: +1 772 283 8020

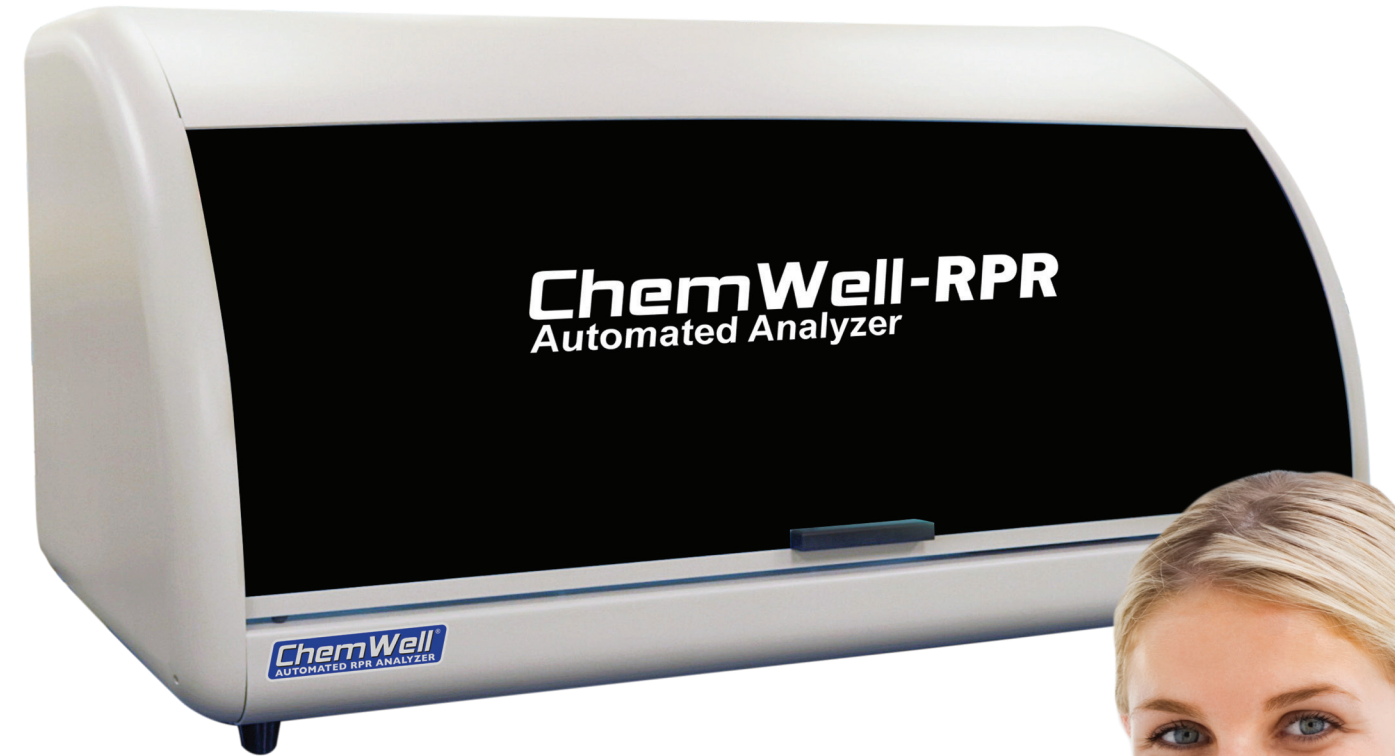
Awareness Technology, Inc. Europe
tel: +43 (0) 2236 892465 fax: +43 (0) 2236 892464

Awareness Technology, Inc. Asia & Africa
tel: +971 (06) 557 80 58 fax: +971 (06) 557 80 59



ChemWell®-RPR

Automated Analyzer



Automated Nontreponemal Syphilis Testing

- **Reliable**
- **Accurate Results**
- **192 Test Per hour**
- **Titer Up To 1:2048 Dilution**



International market only

315801F



ChemWell®-RPR Automated Analyzer

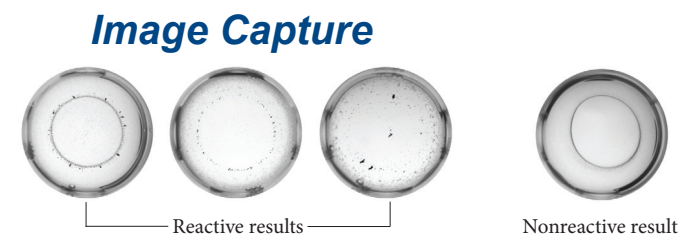
Introducing the next evolution in syphilis testing which complies with the USA CDC recommended traditional algorithm for Nontreponemal syphilis screening¹. Laboratorians can now automate Nontreponemal testing and drive significant operational efficiencies while minimizing false-positive results.

Made in the USA, ChemWell-RPR is a fully automated syphilis analyzer. Laboratories will benefit from substantial labor savings and removing all subjectivity from results interpretation.

1. MMWR, Vol. 60, #5, Feb. 11, 2001

How It Works

In place of manual RPR cards, this system uses 4 standard 48 well microplates to analyze 192 samples with no operator intervention. High resolution images are interpreted by a proven algorithm and retained for later reference. A second test can be run on positive samples to determine titers.



Evaluation of the ChemWell-RPR Automated Syphilis Analyzer

A total of 5838 specimens were evaluated to determine reactivity. Of the 5838 - 1760 were reactive and 4072 specimens were nonreactive. A sensitivity >99.0% and a specificity >99.0% were determined.

ChemWell® RPR Analyzer Results			
Visual Results	Reactive		Nonreactive
	Reactive	1760	*5
	Nonreactive	1	4072

*Note: Later the 5 discordant samples were tested with a treponemal and another nontreponemal test and found to be nonreactive. The reactive samples ranged in reactivity from minimal 1:1 titers to 1:64 titers.

Operational Value

- Automated, walkaway system
- Throughput of 192 test per hour
- Eliminate subjectivity
- Reduced technical training
- Data Management (Analyze, Archive, Retrieve)
- Superior quality and service from a reliable and experienced provider

“The Most Significant Innovation to Syphilis Testing in the Last 30 Years”



Clinical Value

- Accurate and reproducible results
- Less over-treatment from positives due to past exposures that are no longer active
- Lower total healthcare costs
- Two modes: Qualitative screening and Titer for therapeutic monitoring

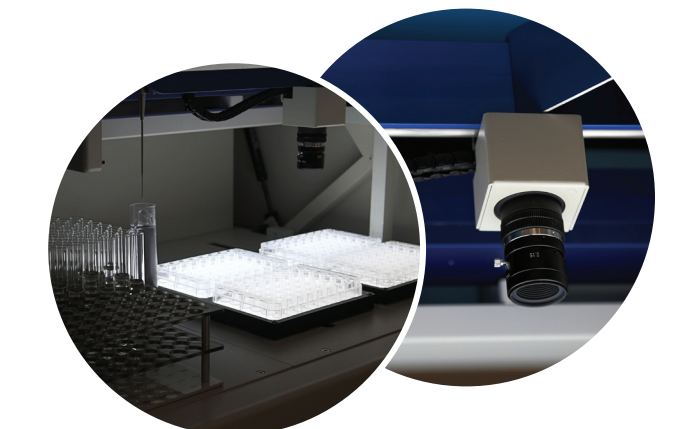
The Nontreponemal Advantage

Because of the demand for manual labor, and due to the subjectivity in borderline samples, some laboratories preferred running Treponemal ELISA first in a reverse algorithm. With ChemWell-RPR there's no need to compromise. Use the USA CDC recommended algorithm and save money since automated RPR cost much less than ELISA.

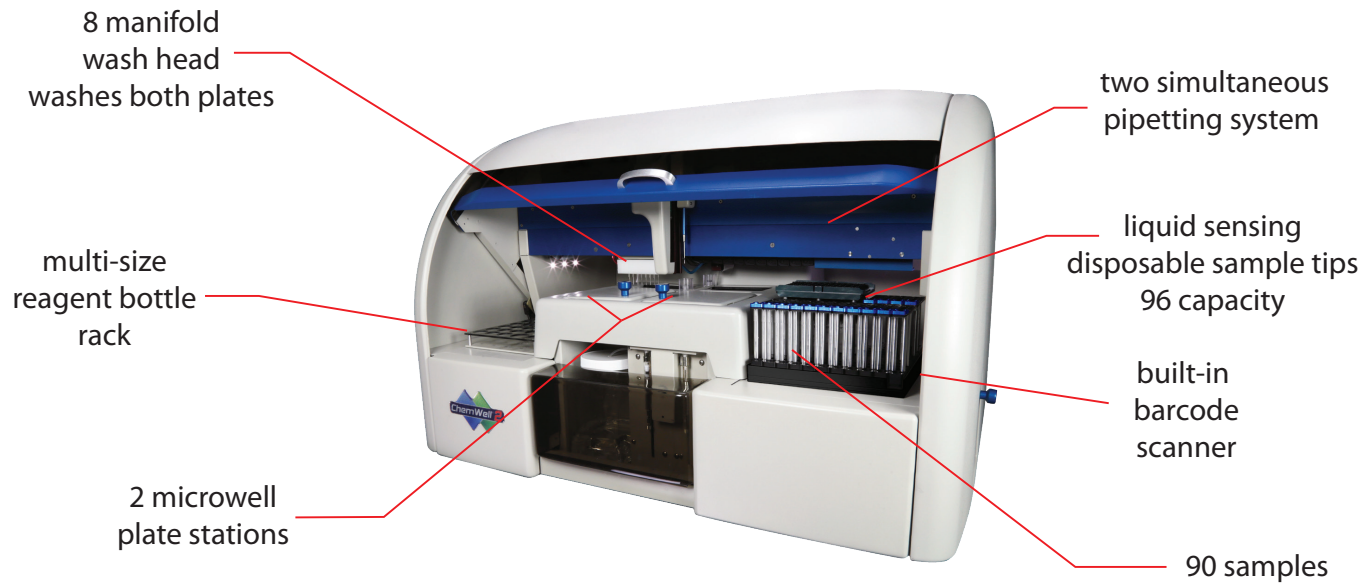
Day Since 1st Bleed	Non-treponemal Test			Treponemal Test				
	CW RPR	BD RPR	NT EIA	Treponema	PK TP	Serodia	Trinity Biotech	
				Syphilis	Syphilis	TPPA Syp	Syphilis IgG	Syphilis IgM
Day 0	NEG	NEG	NEG	NEG	NEG	NEG	NEG	NEG
Day 5	NEG	NEG	NEG	NEG	NEG	NEG	NEG	NEG
Day 10	NEG	NEG	NEG	NEG	NEG	NEG	NEG	NEG
Day 13	NEG	NEG	NEG	NEG	NEG	NEG	NEG	NEG
Day 31	POS	POS	NEG	NEG	NEG	NEG	NEG	NEG
Day 45	POS	POS	POS	POS	POS	POS	IND	POS
Day 48	POS	POS	POS	POS	POS	POS	IND	POS
Day 52	POS	POS	POS	POS	POS	POS	IND	POS
Day 59	POS	POS	POS	POS	POS	POS	POS	POS

NEG= Negative, POS= Positive, IND= Indeterminate, Syphilis Seroconversion panel PSS901

Courtesy of Centers for Disease Control and Prevention



- A 2015 study by the USA CDC determined that Nontreponemal tests can detect infection up to 14 days earlier than Treponemal test
- Treponemal test will be positive for IgG long after infection
- Preserve valuable blood resources with fewer false-positives in blood bank screening
- Only Nontreponemal test can be used to monitor therapy



Fluid handling:	Pipetting range 5 µL – 1.95 mL Typical reaction volume range of 200 µL to 250 µL
Probes:	Liquid sensing probes monitor remaining volumes, crash protection
ELISA reader:	Accuracy of ±1% + 0.01 A or better up to 1.5 A and ±2% or better above 1.5 A
ELISA Optical filter range:	4 standard filters 405, 450, 492, 630 nm, optional additional filters available
CLIA reader:	Glow Luminescence
Sensitivity/Detection limit:	HRP 1x10 ⁻¹⁸ moles, ALP 1x10 ⁻²¹ moles
Detector:	Photomultiplier (PMT)
Spectral Response Range:	300-650 nm
Peak Wavelength:	400 nm
Standard sample rack:	90 sample capacity - serum vials or 13x100 mm tubes
Standard reagent rack:	Typically 29 - Assorted replaceable racks and custom designed racks are available for various bottle sizes
Barcode scanner:	Integrated barcode scanning with positive patient ID system
Light source:	Tungsten-Xenon lamp
Dimensions:	Height - 57.7 cm Width - 107 cm Depth - 62.4 cm Weight - 60 kg



Two-Plate ELISA and Chemiluminescence
The Ultimate in Flexibility

AWARENESS
TECHNOLOGY, INC.
www.awaretech.com
 Awareness Technology, Inc. USA & International
 tel: +1 772 283 6540 sales@awaretech.com
 Awareness Technology, Inc. Europe
 tel: +43 (0) 2236 892465 info@awaretech.eu
 Awareness Technology, Inc. Asia & Africa
 tel: +971 (06) 557 80 58 info@awaretech.com

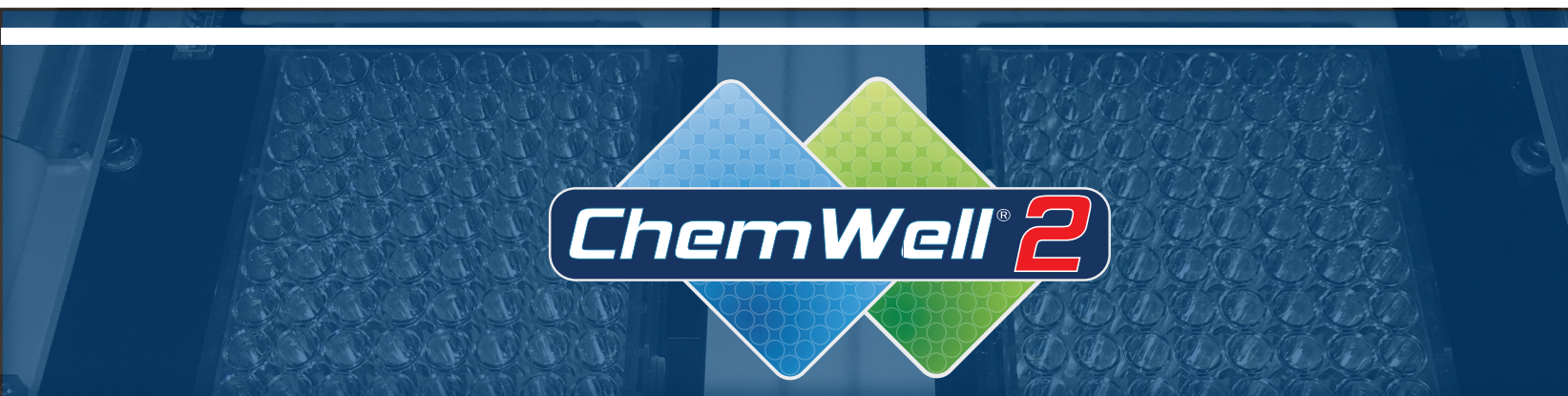


315000F

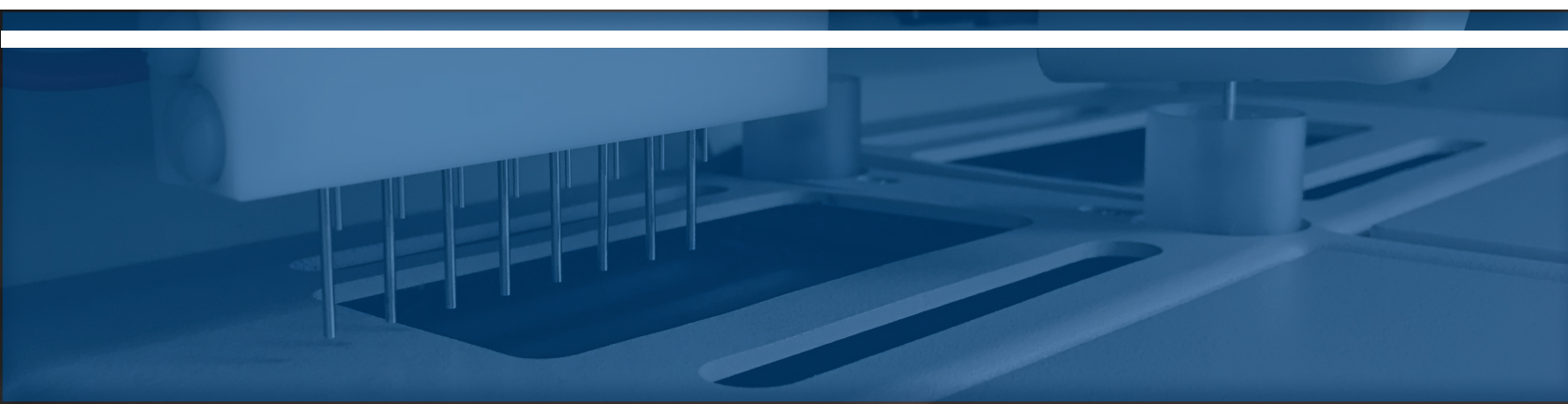
Automated Two-plate ELISA/CLIA Analyzer

ChemWell 2 Automated ELISA/Chemiluminescent analyzer offers a true two-plate solution for processing microwell ELISA and CLIA assays in a robust walk away system.

- Separate reagent and sample pipetting improves throughput
- Individual strips are timed separately allowing a wider variety of protocols to run simultaneously
- ChemWell 2 management software keeps track of assay timing requirements and automatically regulates assay start times to avoid conflicts. Mix and match ELISA or CLIA tests by strip row or by plate



- ChemWell 2's programmable wash uses an 8-well wash head allowing for an entire strip to be washed at once with consistent timing
- Built in barcode reader tracks sample placement
- Optional liquid sensing disposable probe tips are available for sample dispensing



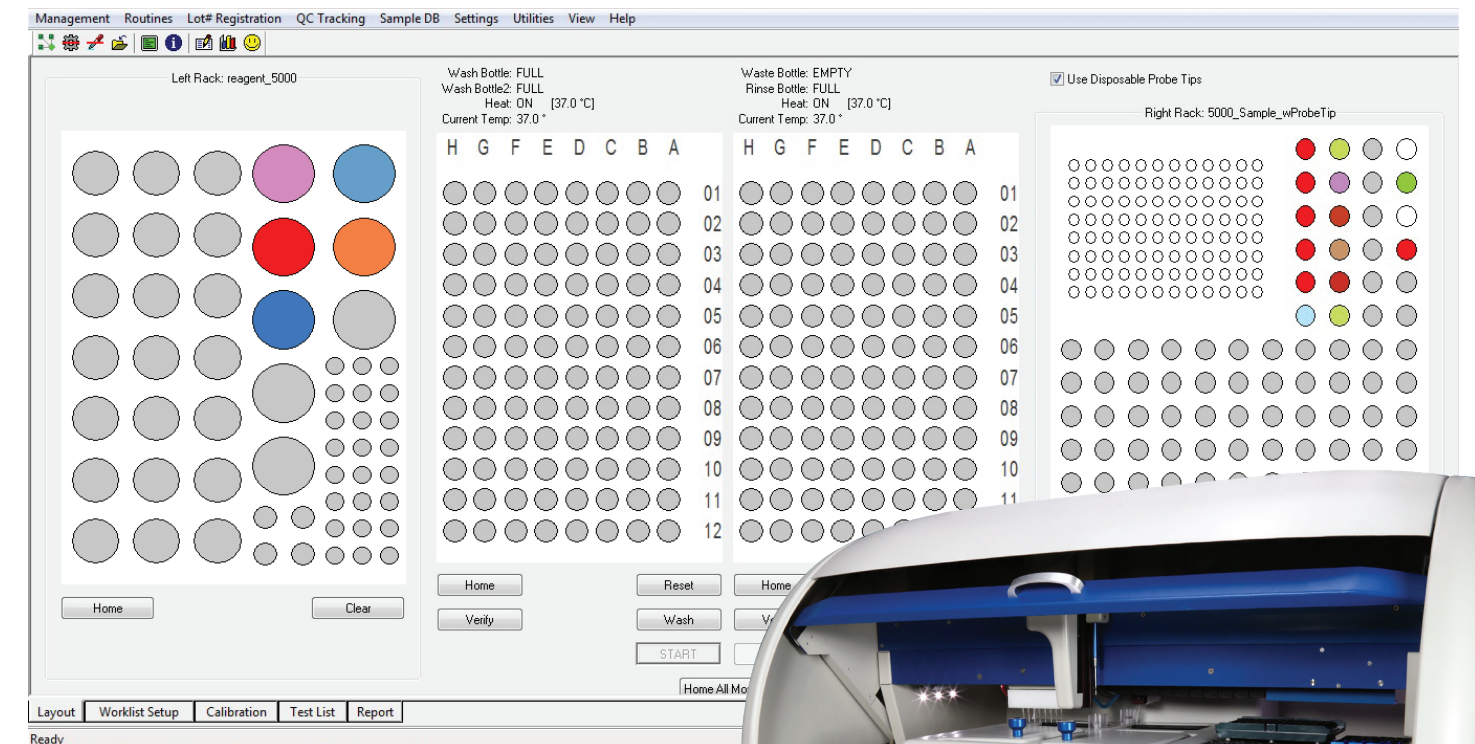
ChemWell[®] 2

Versatile • Flexible • Reliable • Accurate • Programmable • Two-Plate ELISA/CLIA Analyzer

- ChemWell 2's combination of hardware and software is designed to optimize ELISA/CLIA testing on one or two microwell plates.
- Follow prompts to program test kits, many flexible options. Once you have created your worklist, loaded the samples and reagents, ChemWell 2 will do the rest.
- ChemWell 2 comes with a host of reporting options, providing your laboratory with critical data in an organized printout or electronic document, reports are customizable
- Ideal for programming an assortment of microwell ELISA and CLIA kits including infectious diseases, hormones, tumor markers, auto immunity and toxins.



Holds 92 disposable tips and 90 samples



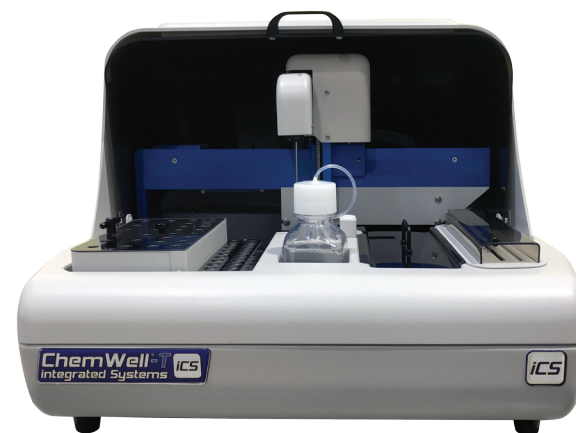
ChemWell 2's intuitive software design helps keep users informed of on-board processes by providing a visual representation of the entire workflow in an easy to understand graphical interface.

ChemWell 2's software options provide users the ultimate in Flexibility.



Automated Biochemistry Analyzer

Capabilities	Dilutions, predilutions, dispensing single or multiple reagents
Maximum throughput	100 endpoint test per hour
Min. and Max. volume	2 µL - 400 µL
Maximum number of specimens	20
Maximum number of reagents	28
Reaction vessel	Washable cuvettes, 5 per strip, holds 40
Instrument bottles	0.25 L Priming Bottle (optional 0.5 L bottle available)
Thermal control	Cuvette Carrier 37° C or ambient room temperature Refrigerated Reagent Rack cools 8° to 12° C below ambient through Peltier thermoelectric modules
Optical design	Reads bichromatic absorbance; NIST traceable calibration;
Filter wheel	340, 405, 505, 545, 580, 630 nm
Light Source	Halogen Lamp
Linear range	0.0 to 3.0A
Photometric accuracy	± (1% of the reading +0.005 A from 0 to 1.0 A) ± (2% of the reading +0.005 A from 1.0 to 3.0 A)
Test menu	ALAT/GPT, Albumin, Alkaline Phosphatase, Amylase, ASAT/GOT, ASO, Bilirubin (total and direct), Calcium, Cholesterol, CK MB, CK - NAC, Creatinine, CRP, GGT, Glucose, HbA1c, HDL (Direct), LDH - L, LDL (Direct), Magnesium, Micro Albumin, Phosphorus, RF, Total Protein, Triglycerides, Urea, Uric Acid
QC options	Store control data, print Levey-Jennings or QC range plots, calculate SDs
Software upgrade	USB and Internet upgrades
Operating systems	Microsoft Windows® Windows 7,8,10
Dimensions & weight	53 cm Wide x 50 cm Deep x 40 cm High Approximate weight < 15 kg (37 lbs)
Optional bar code scanner	Bar code scanner available, allowing for rapid entry of patient data using code 39 bar codes
Optional ISE module	Plug in SelectaLyte® ISE module for the automated processing of Na+, K+, Cl- electrolytes with accuracy and reliability. Monitored by our unique OWNchip technology



Awareness Technology, Inc. USA & INTERNATIONAL:
1935 S.W. Martin Hwy., Palm City, FL 34990, USA
tel.: +1 772 283 6540, fax: +1 772 283 8020
info@awaretech.com

Awareness Technology, Inc. EUROPE:
Franz-Siegel-Gasse 1, 2380, Perchtoldsdorf, Austria
tel.: +43 (1) 804 81 84, fax: +43 (1) 804 81 85
info@awaretech.eu

Awareness Technology, Inc. ASIA & AFRICA
Q3-146, SAIF Zone, 120543, Sharjah, United Arab Emirates
tel.: +971 (06) 557 80 58, fax: +971 (06) 557 80 59
info@awaretech.com

ISO 13485:2003



www.awaretech.com

ChemWell®-T iCS

iCS Integrated Chemistry System

Automated Biochemistry Analyzer

iCS model not available for sale in the USA
Please see ChemWell-T for USA sales



Deliver Results With Confidence

Accurate results providing the laboratory with confidence

Compact and efficient chemistry analyzer

Reliable performance

314625 03/2016 Rev A

AWARENESS
TECHNOLOGY, INC.



i-chem

ChemWell®-T iCS & i-chem Biochemistry Reagents

PC controlled, automated biochemistry analyzer, for performing routine biochemistries & test panels using i-chem reagent kits.

• Complete System

ChemWell-T iCS (Integrated Chemistry System) is a continuous loading, random access, bench-top biochemistry analyzer with a maximum throughput of 100 tests per hour.

• Ease of Use

ChemWell-T iCS software is intuitive. Visual prompts & graphics indicate placement of reagents/samples and assist the user with rapid setup. System includes a stat facility and complete QC package.

• Accurate and Precise

Decades of experience in instrument design, IFCC recommended formulations, validations with routine CAP survey.

• Economical Operation

ChemWell-T iCS utilizes precision pipetting, as little as 2 µL with a typical reaction volume of 250 µL, reducing reagent volume usage and consumption of DI water. Reusable/washable cuvettes contribute to a lower cost of testing.



ChemWell-T iCS Test Menu

ALAT/GPT

Albumin

Alkaline Phosphatase

Amylase

ASAT/GOT

ASO

Bilirubin (total and direct)

Calcium

Cholesterol

CK MB

CK - NAC

Creatinine

CRP

GGT

Glucose

HbA1c

HDL (Direct)

LDH - L

LDL (Direct)

Magnesium

Micro Albumin

Phosphorus

RF

Total Protein

Triglycerides

Urea

Uric Acid

Multi Constituent Calibrator

Reaction Vessels

Plastic cuvettes 5 per section, holds up to 40 reaction vessels

Reagent & Sample placement

ChemWell-T iCS uses an integrated reagent and sample rack labeled with the most commonly used tests for convenient placement.

Liquid Stable Reagents

No reagent prep work required. Load kit bottles directly onto the instrument. The reagent rack is removable for refrigeration; covered, cooled, and insulated while on board to yield long, stable calibrations.

Cuvette Carrier

ChemWell-T iCS cuvette carrier, heated to maintain 37°C

ChemWell® Management Software

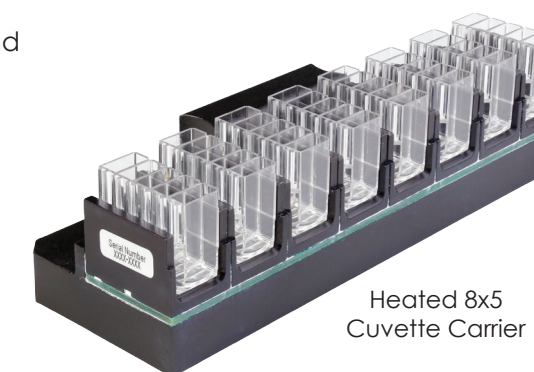
The software includes a preprogrammed assay list, QC reporting and diagnostic capabilities. Setup is easy, with colorful graphics and on-screen prompts. The software includes internal performance monitoring, patient database and multiple options for LIS, data export and custom reports.

Quality Control

- Data tracking capability
- Levey-Jennings by ranges or standard deviation
- Reliable proven technology



Integrated reagent and sample rack



Heated 8x5 Cuvette Carrier



Sized for the medium to low volume Laboratory

*For more information on preprogrammed/validated i-chem reagent kits available, please see i-chem reagent product sheet

ChemWell®-T

Fully Automated Biochemistry / Turbidimetric Analyzer

Maximum throughput	100 test per hour, not including optional ISE
Min. and Max. volume	2 µL - 388 µL
Rack for reagents and samples	<p>The Universal Rack includes five removable and user-selectable sectors for both reagent bottles and sample tubes. Assorted replaceable racks and custom designed rack segments are available for various bottle sizes</p> <p>Sector A holds four 30 ml reagent bottles Sector B holds four 15 ml reagent bottles Sector C holds four 5 ml vials and four 12 mm x 75mm tubes or 2 ml skirted conical tubes Sector D holds ten 12 mm x 75mm tubes Sector E holds eight 13 mm x 100 mm tubes or 12 mm x 75 mm tubes</p>
Number of specimens	Typically 20 including calibrators and controls but variable depending on rack sectors selected
Reaction vessel	8 cuvette strips, 5 tests per strip, total of 40 reactions on board
Minimum reaction volume:	240 µl
Maximum reaction volume	700 µl
Instrument bottles	0.25 L Priming Bottle
Thermal control	<p>Cuvette Carrier 37° C or ambient room temperature Refrigerated Reagent Rack cools 8° to 12° C below ambient through Peltier thermoelectric modules</p>
Optical design	Single channel photometer, NIST traceable absorbance calibration
Filter wheel	340, 405, 505, 545, 580, 630 nm
Light Source	Tungsten Halogen Lamp
Linear range	0.0 to 3.0A
Photometric Accuracy	<p>± (1% of the reading +0.005 A from 0 to 1.0 A) ± (2% of the reading +0.005 A from 1.0 to 3.0 A)</p>
Calculation modes	Single standard, factor, fixed time kinetics, kinetics by standard or factor, multicalibrator point-to-point, linear regressions, cubic spline, 4-parameter logistic and percent absorbance
QC Options	Store control data, print Levey-Jennings or QC range plots, calculate SDs
Upgrade Format	USB and Internet upgrades
Operating Systems	Microsoft Windows®
Dimensions & Weight	<p>53 cm Wide x 50 cm Deep x 40 cm High Approximate weight < 15 kg (37 lbs)</p>
Optional barcode scanner	Barcode scanner available, allowing for rapid entry of sample data using code 39 barcodes



Awareness Technology, Inc. USA & International
tel: +1 772 283 6540 fax: +1 772 283 8020

Awareness Technology, Inc. Europe
tel: +43 (0) 2236 892465 fax: +43 (0) 2236 892464

Awareness Technology, Inc. Asia & Africa
tel: +971 (06) 557 80 58 fax: +971 (06) 557 80 59



314620 F

sales@awaretech.com

Deliver Results With Confidence

ChemWell®-T

Fully Automated Biochemistry / Turbidimetric Analyzer

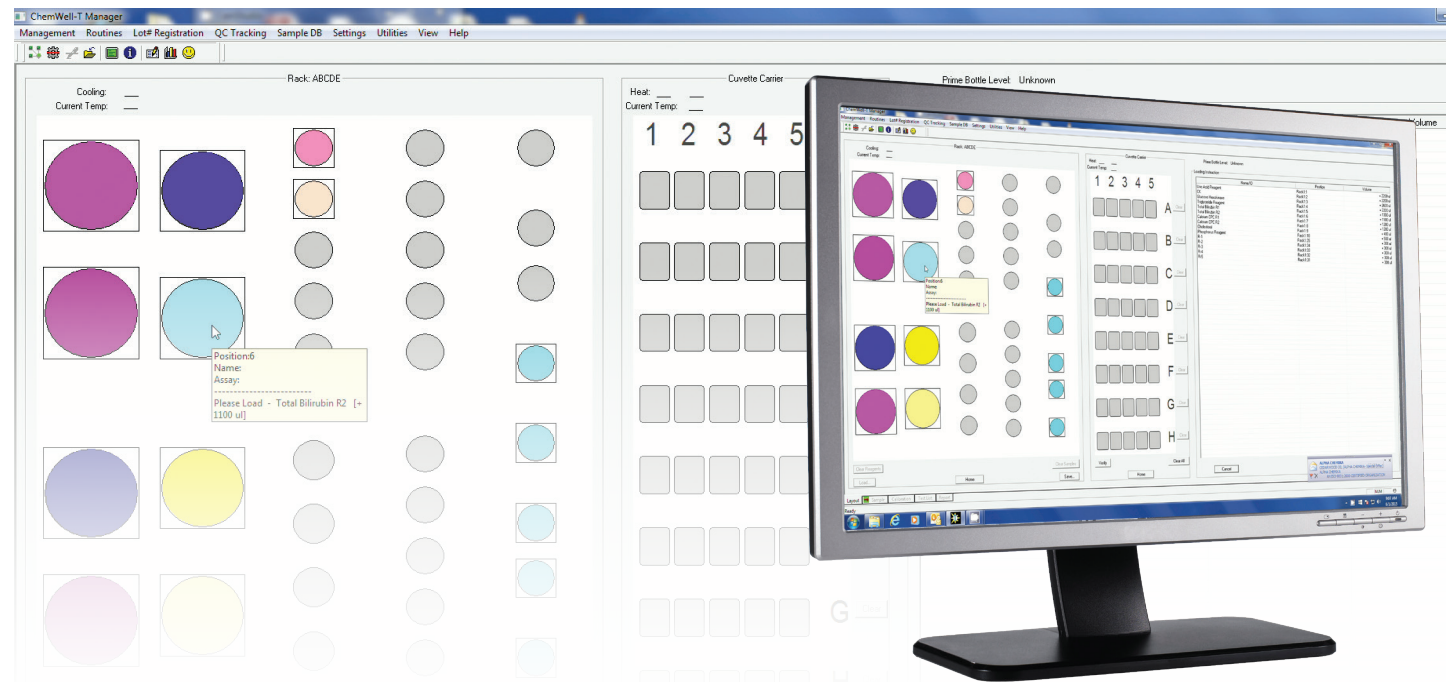


Accurate results providing confidence to clinicians

Compact and efficient chemistry analyzer

Reliable performance





The ChemWell®-T Advantage.

Accurate and Precise

Above all other considerations when you are buying a biochemistry analyzer, you want results you can always trust. ChemWell-T's reliable optics and precision pipetting provide consistent dependable performance for your peace of mind.

Flexible

ChemWell-T is a computer-dependent open system. Its comprehensive software allows you to enter parameters to build a test menu for a wide variety of commercially available biochemistry and turbidimetric kits. It is easy to edit, delete, and grow your list of applications.

Robust

Materials and workmanship are specified and tested to assure product quality and longevity. In addition, to help assure quality performance, ChemWell-T has many instructional prompts, error messages, and features that track instrument QC and service needs.

Easy

ChemWell-T's intuitive software visually mirrors what takes place on the analyzer. This facilitates programming assays, daily operation, and use of the many additional optional features that make ChemWell-T both powerful and convenient.



ChemWell®-T Automation, with all its advantages, optimized for lower throughput labs

Capabilities Overview

ChemWell-T is designed to perform kinetic and endpoint assays with single or multiple reagents. It includes patient database software (or accepts a worklist via LIS). Once you enter an order and load the reagents and samples, the instrument processes all the tests and presents results for reporting, storing, or electronic export. A variety of assay calibration equations are available. Features include random access, continual loading, stat capability, on-board reagent cooling, ISE module ready, acceptance of controls anywhere any time, and automatic application of user entered QC criteria and test interpretations.

Quality Control

- Registry of controls by lot number and expiration date
- Automatic Levey-Jennings tracking or QC plots based on acceptance ranges
- Many options for specific test QC such as limits for blank absorbance, minimum or maximum starting absorbance, and reflex testing for out-of-range kinetics

Rack Configurations

ChemWell-T comes with a universal reagent and sample rack having 5 different sectors labeled A-E. Additional sectors can be ordered separately. Sectors A-D fit any location in the rack, making it possible to customize the rack for various workloads simply by rearranging the interchangeable sectors.

An optional second rack is available with a fixed configuration. This rack is insulated and includes a cover to help chill reagents left on board for longer periods of time. The instrument and insulated rack are available with and without a sample barcode scanning option.

Reaction Cuvette and Carrier

ChemWell-T's 37° C incubated cuvette carrier holds 40 tests as eight disposable strips of 5 wells each. The carrier automatically aligns wells for pipetting, mixing, and reading.

ChemWell® Management Software

ChemWell software has two components: Assay Editor - where test programs are created and edited, ChemWell Manager - where patient data is stored, work-lists are generated and all the operations are controlled.

Five tabs walk the user through test set up

SAMPLE - select or enter sample Identifications and choose from the test menu which tests to run for each, select replicates if desired and Indicate Stat samples

CALIBRATION - use a stored curve or make a new one. For multi-point assays there are many options to choose from including curve editing ability

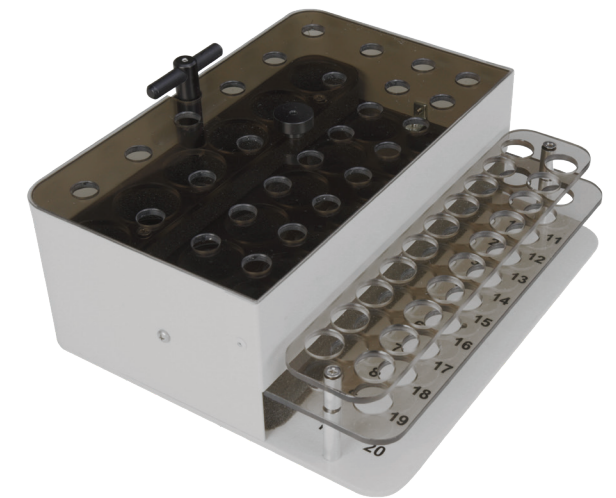
LAYOUT - verify proper placement of reagents and samples using colorful graphic references and familiar tools such as drag and drop

TEST - monitor work-in-progress and completed results

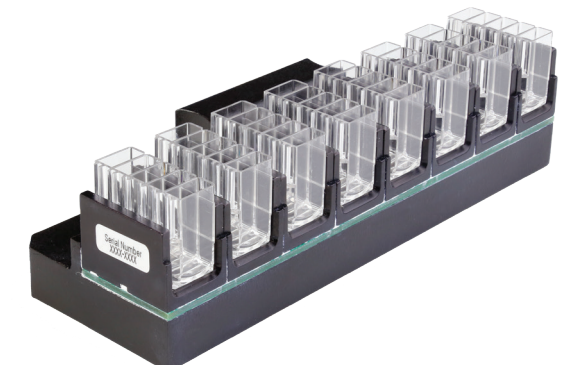
REPORT - create reports by assay, by patient, by date range and more



Universal rack
Optional interchangeable segments available



Optional insulated reagent and sample rack
(available with or without barcode)



37° C Heated 8x5
Cuvette Carrier

